

190

SHEET 4 OF 8

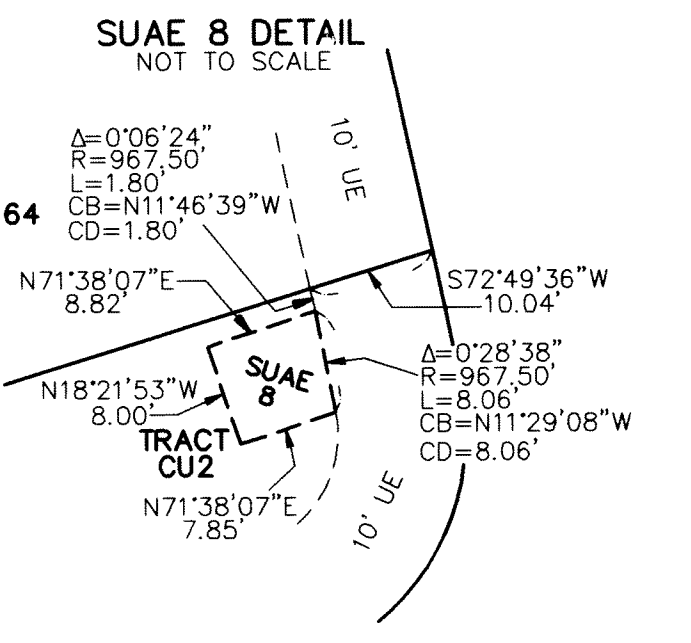
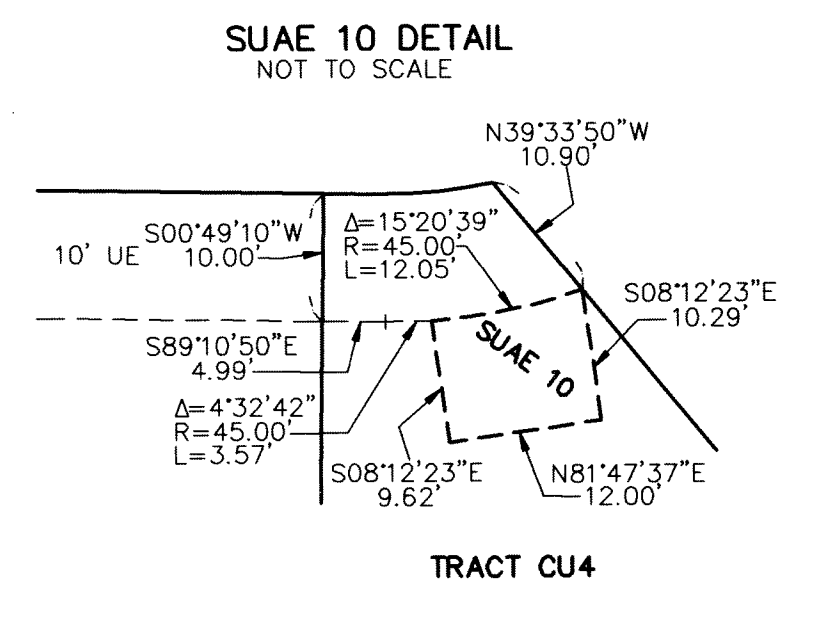
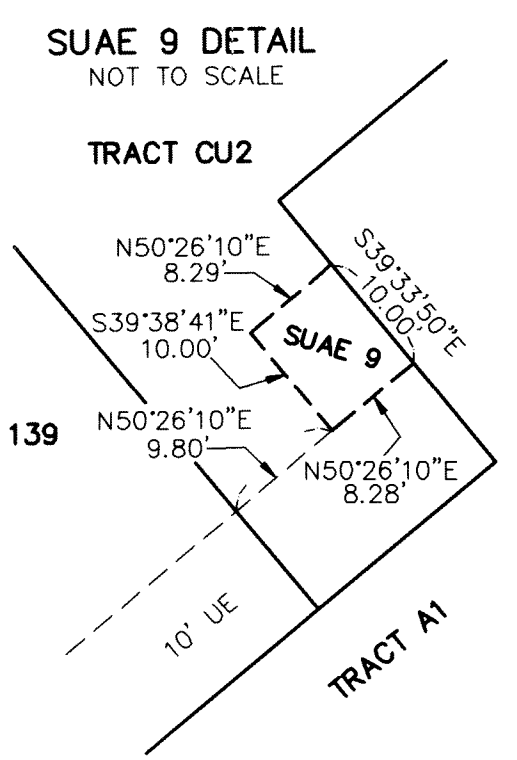
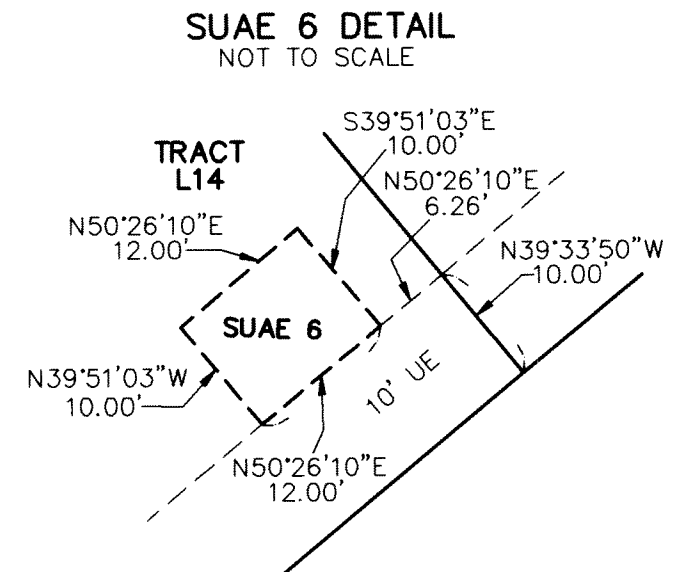
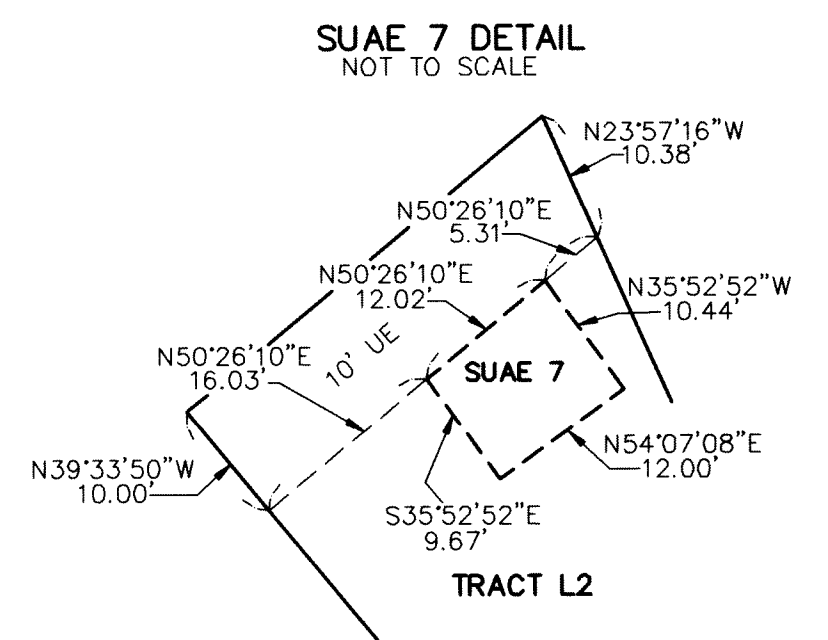
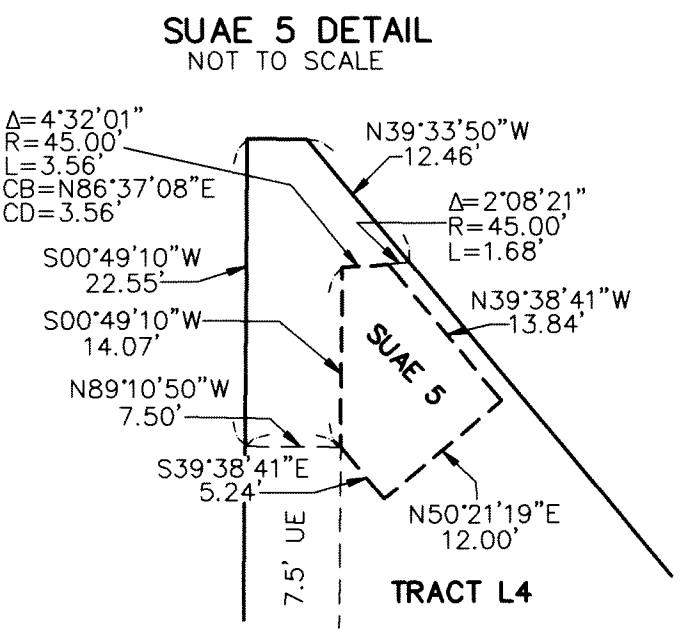
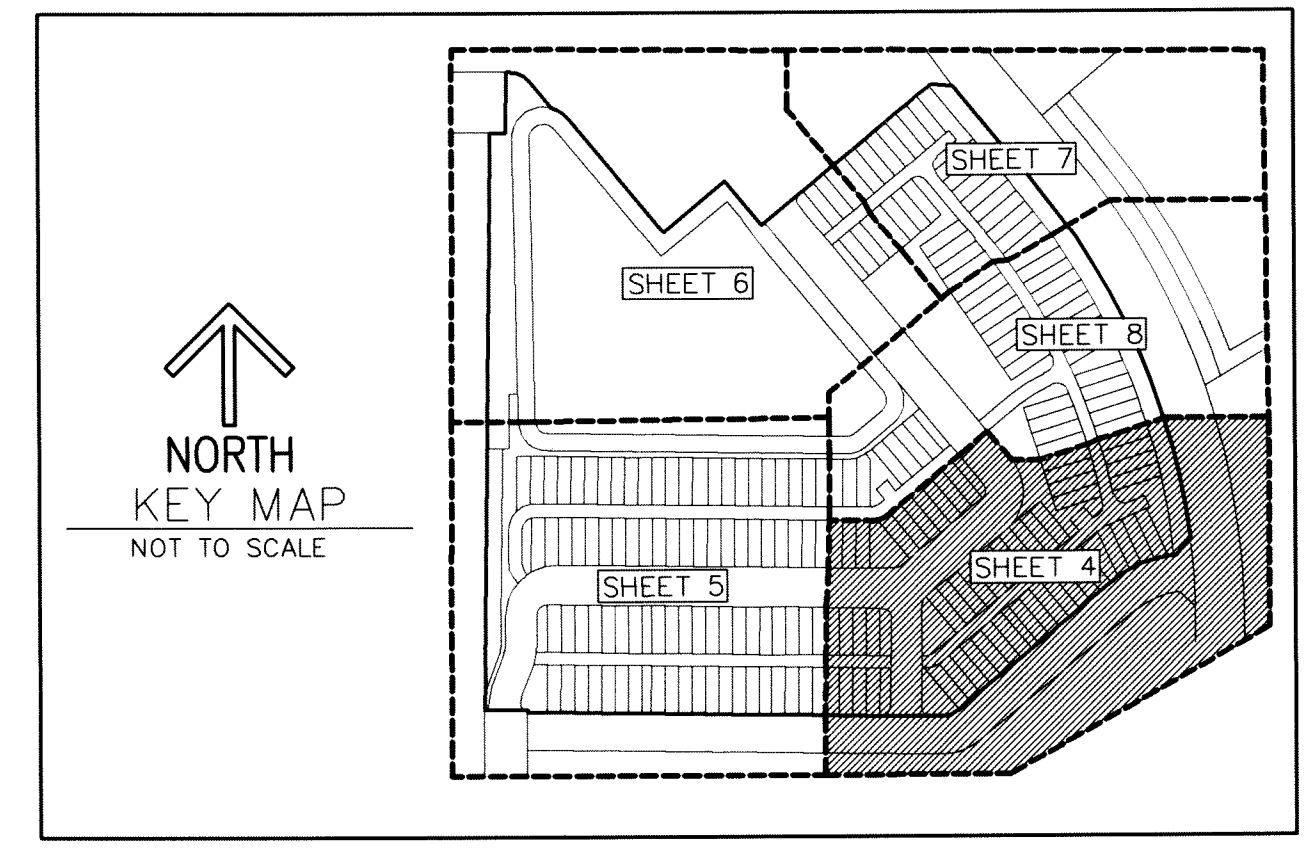
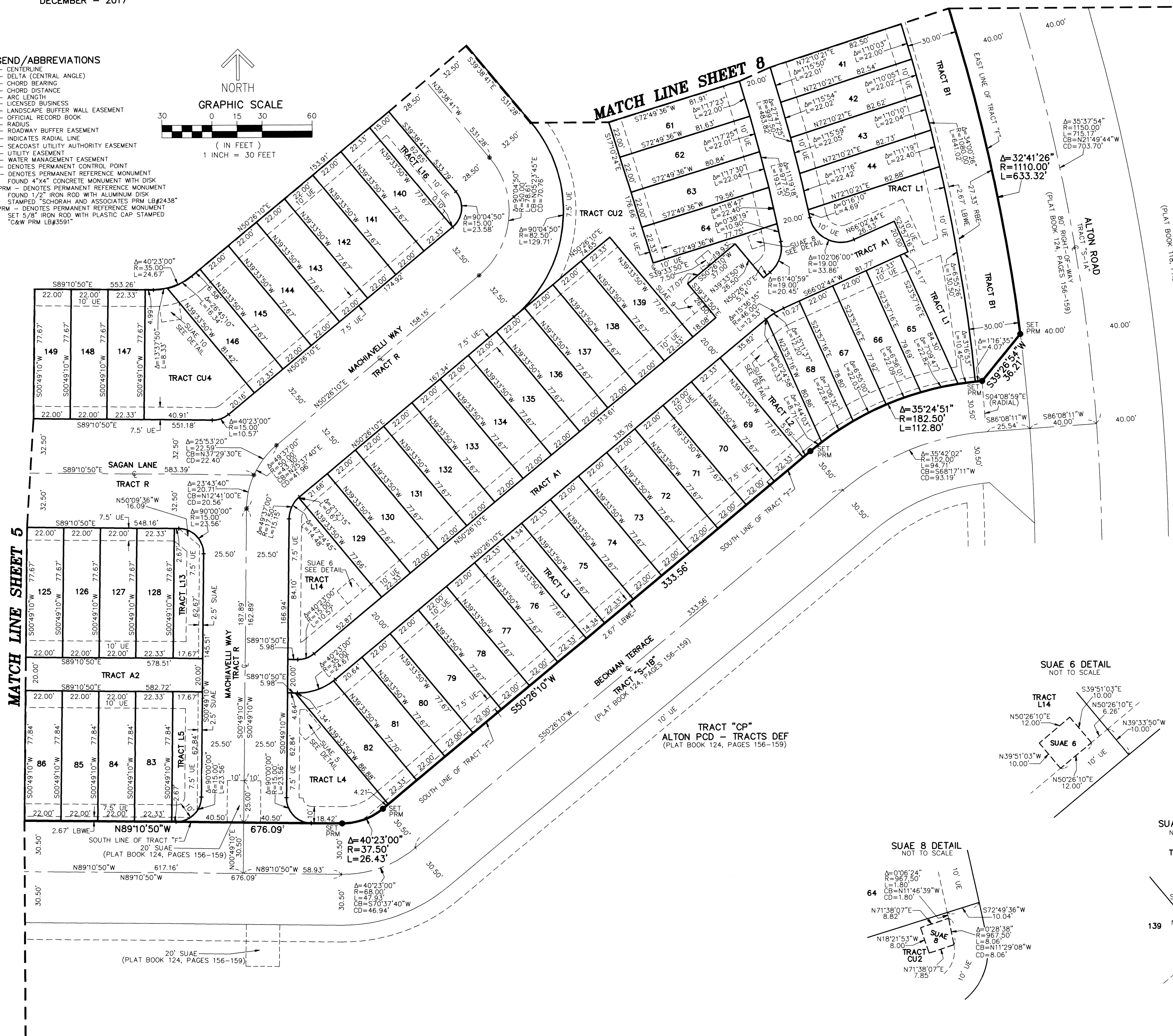
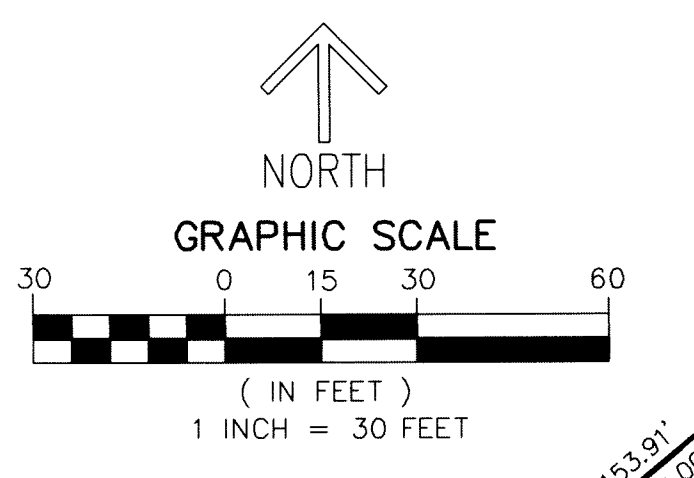
THIS INSTRUMENT PREPARED BY
DAVID P. LINDLEY

OF
CAULFIELD and WHEELER, INC.
SURVEYORS - ENGINEERS - PLANNERS
7900 GLADES ROAD, SUITE 100
BOCA RATON, FLORIDA 33434 - (561)392-1991
CERTIFICATE OF AUTHORIZATION NO. LB3591
DECEMBER - 2017

ALTON NEIGHBORHOOD 4

BEING A REPLAT OF A PORTION OF TRACT "F", ALTON PCD-TRACTS DEF, AS RECORDED IN PLAT BOOK 124, PAGES 156 THROUGH 159
OF PUBLIC RECORDS OF PALM BEACH COUNTY, FLORIDA, LYING IN SECTIONS 26 AND 35, TOWNSHIP 41 SOUTH, RANGE 42 EAST,
CITY OF PALM BEACH GARDENS, PALM BEACH COUNTY, FLORIDA

- LEGEND/ABBREVIATIONS**
- CL - CENTERLINE
 - Δ - DELTA (CENTRAL ANGLE)
 - CB - CHORD BEARING
 - CD - CHORD DISTANCE
 - L - ARC LENGTH
 - LB - LICENSED BUSINESS
 - LBWE - LANDSCAPE BUFFER WALL EASEMENT
 - O.R.B. - OFFICIAL RECORD BOOK
 - R - RADIUS
 - RBE - ROADWAY BUFFER EASEMENT
 - (R) - INDICATES RADIAL LINE
 - SUAE - SEACOAST UTILITY AUTHORITY EASEMENT
 - UE - UTILITY EASEMENT
 - WME - WATER MANAGEMENT EASEMENT
 - - DENOTES PERMANENT CONTROL POINT
 - - DENOTES PERMANENT REFERENCE MONUMENT
 - - FOUND "X" CONCRETE MONUMENT WITH DISK
 - - FND PRM - DENOTES PERMANENT REFERENCE MONUMENT FOUND 1/2" IRON ROD WITH ALUMINUM DISK STAMPED "SCHORAH AND ASSOCIATES PRM LB#2438"
 - - SET PRM - DENOTES PERMANENT REFERENCE MONUMENT SET 5/8" IRON ROD WITH PLASTIC CAP STAMPED "C&W PRM LB#3591"



MATCH LINE SHEET 5

MATCH LINE SHEET 8

20' SUAЕ (PLAT BOOK 124, PAGES 156-159)

TRACT "CP"
ALTON PCD - TRACTS DEF
(PLAT BOOK 124, PAGES 156-159)

TRACT "R"
ALTON PCD
(PLAT BOOK 118, PAGES 197-206)

TRACT L14
ALTON PCD
(PLAT BOOK 124, PAGES 156-159)

TRACT CU4